



DRILLING LOG



FROM : (mt) 900

TO : (mt) 3410

SCALE : 1/1000

Well Name : WKF W9A

Company : ESSO AUSTRALIA PTY LTD

Country : AUSTRALIA

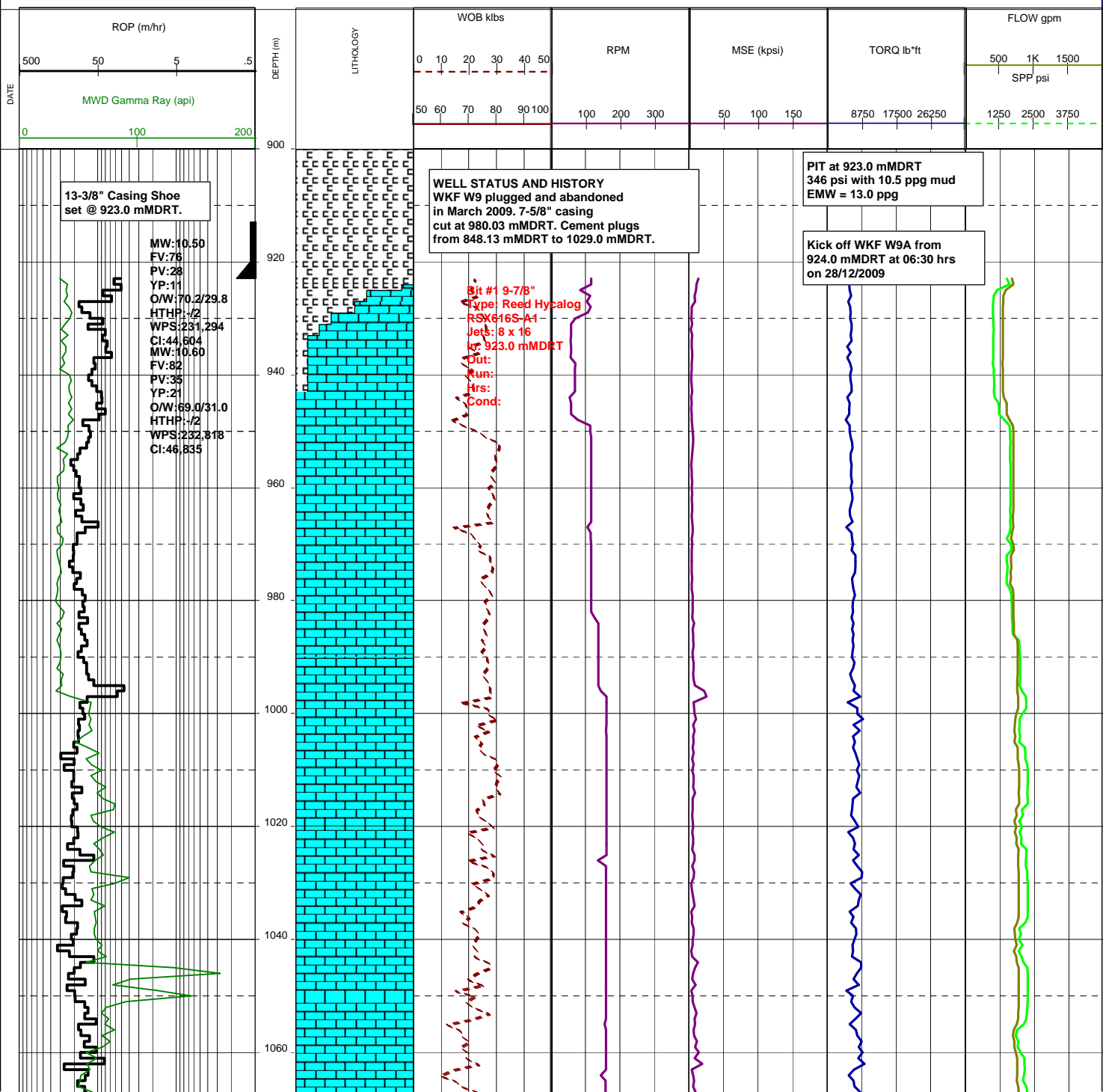
RT-MSL (m) : 41.70

Final TD: XXXX.00 mMDRT

RT-SEABED (m) : 118.70

Final TVD: XXXX.XX mTVDRT

Generated by geoNEXT Package



13-3/8" Casing Shoe set @ 923.0 mMDRT.

MW:10.50
 FV:76
 PV:28
 YP:11
 O/W:70.2/29.8
 HTHP: -/2
 WPS:231,294
 CI:44,504
 MW:10.60
 FV:82
 PV:35
 YP:21
 O/W:69.0/31.0
 HTHP: -/2
 WPS:232,318
 CI:46,835

WELL STATUS AND HISTORY
 WKF W9 plugged and abandoned in March 2009. 7-5/8" casing cut at 980.03 mMDRT. Cement plugs from 848.13 mMDRT to 1029.0 mMDRT.

Bit #1 9-7/8"
 Type: Reed Hycalog
 RSXG16S-A1
 Jets: 8 x 16
 Cut: 923.0 mMDRT
 Run:
 Hrs:
 Cond:

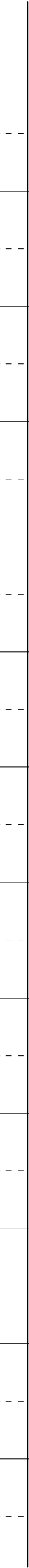
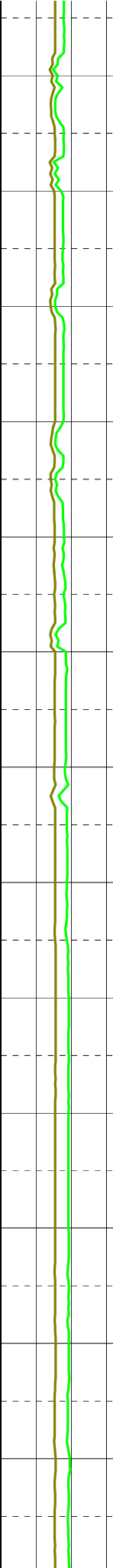
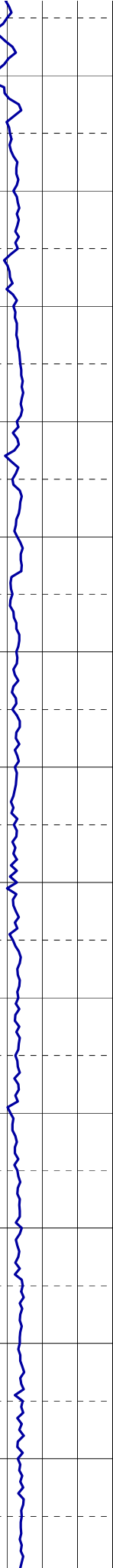
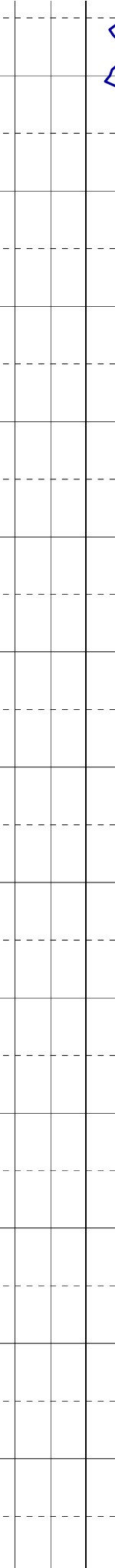
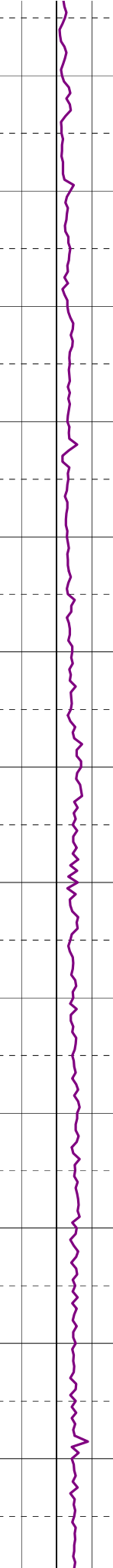
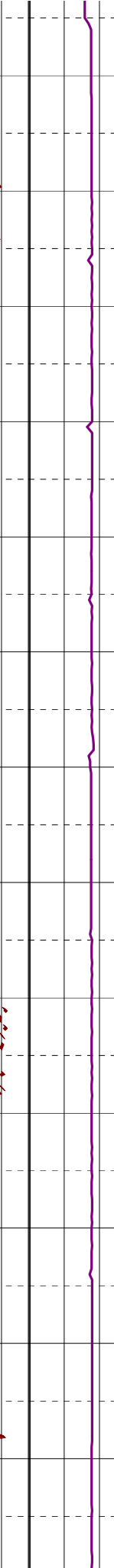
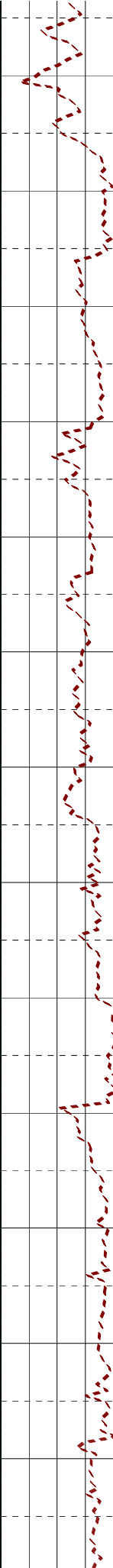
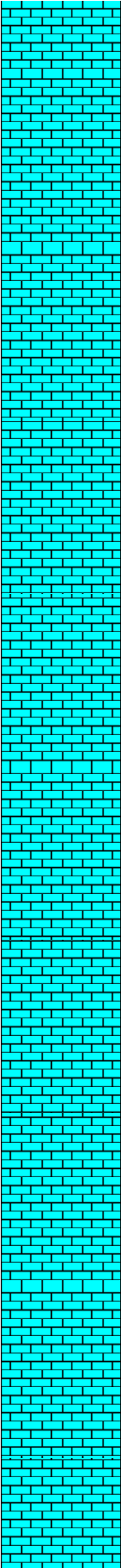
PIT at 923.0 mMDRT
 346 psi with 10.5 ppg mud
 EMW = 13.0 ppg

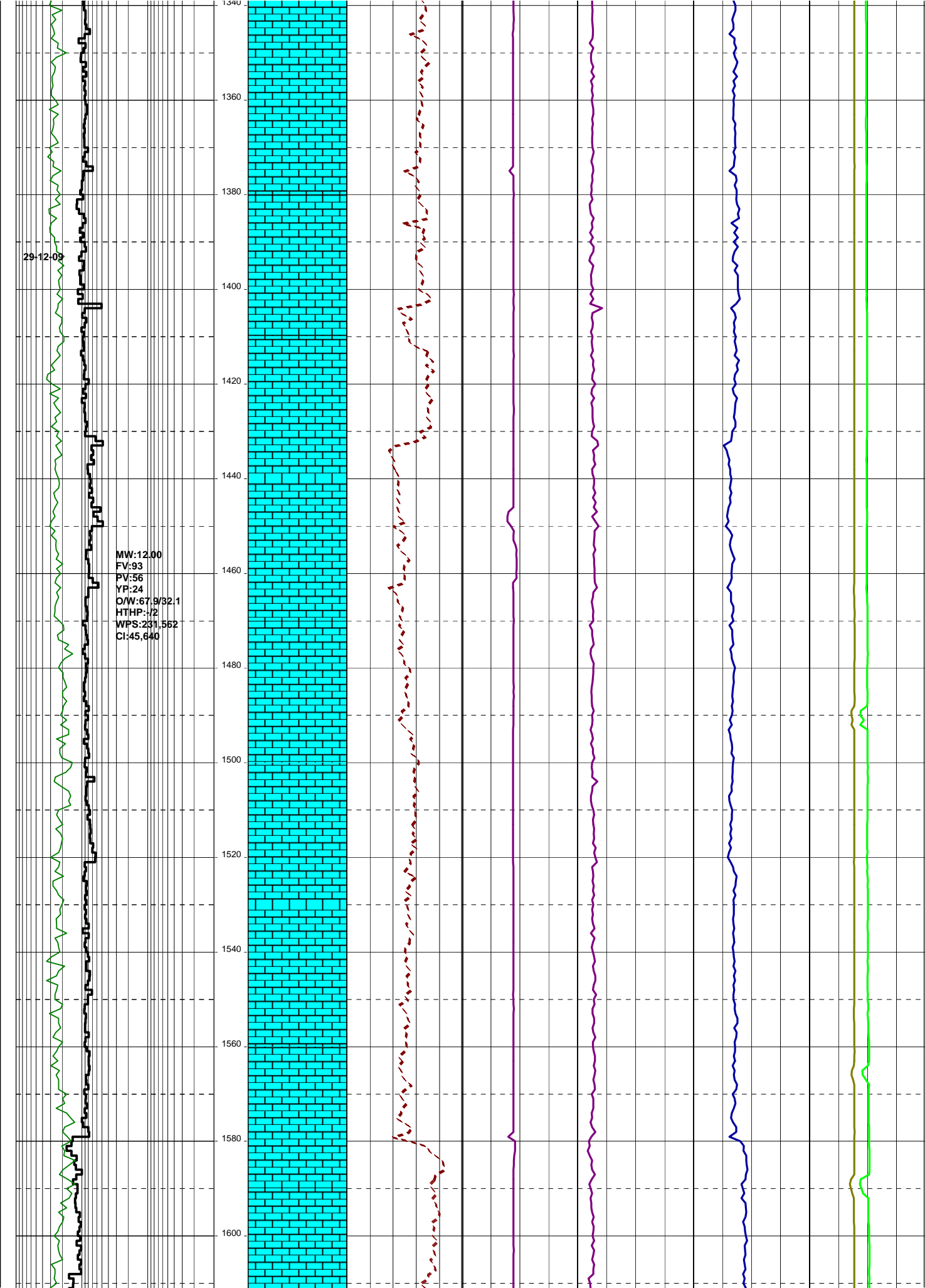
Kick off WKF W9A from 924.0 mMDRT at 06:30 hrs on 28/12/2009

MW:11.70
FV:96
PV:42
YP:26
O/W:68.9/31.1
HTHP:1/2
WPS:239.897
CI:46.662

MW:12.00
FV:89
PV:47
YP:21
O/W:66.9/31.1
HTHP:1/2
WPS:230.947
CI:44.739

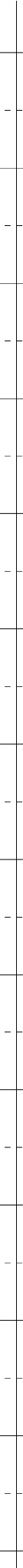
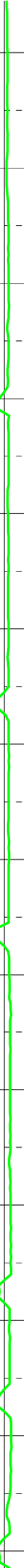
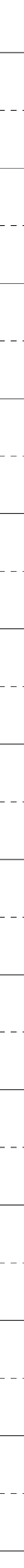
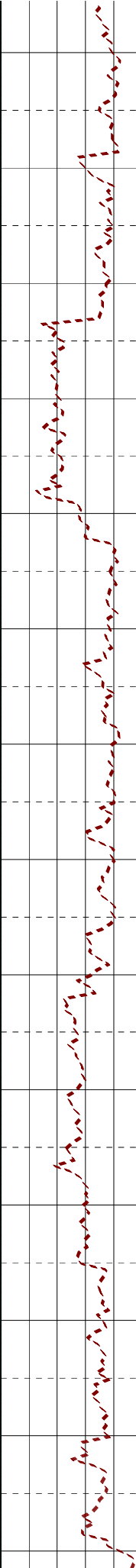
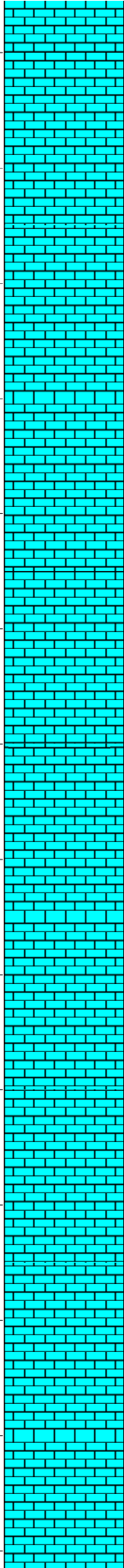
1080
1100
1120
1140
1160
1180
1200
1220
1240
1260
1280
1300
1320
1340





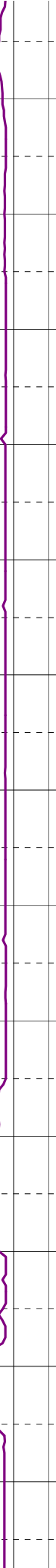
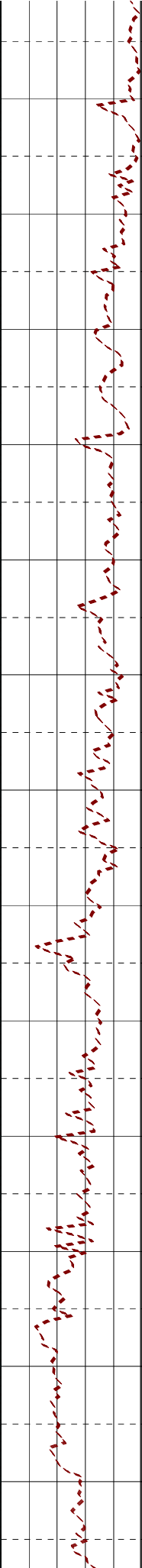
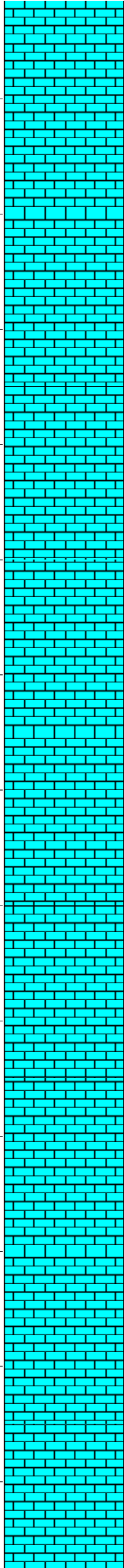
MW:11.95
FV:96
PV:50
YP:26
O/W:67.9/32.1
HTHP:1/2
WPS:226.933
CI:44.554

1620
1640
1660
1680
1700
1720
1740
1760
1780
1800
1820
1840
1860
1880



MW:11.95
FV:95
PV:44
YP:25
O/W:69.6/30.4
HTHP:./2
WPS:237.922
CI:44.359

1900
1920
1940
1960
1980
2000
2020
2040
2060
2080
2100
2120
2140



MW:11.95
FV:94
PV:52
YP:24
O/W:69.4/30.6
HTHP:./2
WPS:225.181
CI:42.208

